



META

MICROSS



**Making bone harvesting
a handy procedure**

Micross: a minimally invasive disposable device indicated for cortical bone harvesting. The excellent cutting performance, due to its outstanding micro-blade, allows for easy collection of autologous bone, even in narrow and hard-to-reach areas.

This harvesting technique best preserves cell vitality of cortical tissues, a fundamental characteristic for effective graft integration. Micross is the only bone harvesting device specifically studied for tunnel surgical techniques that minimise post-operation discomfort.

The external diameter of the instrument is 5mm, and due to its unique shape, the instrument can be inserted into tissue tunnels in the intraoral area.



**The only instrument for
the Tunnel harvesting
technique**

**Geistlich
Select**

Product Code: MET-4049

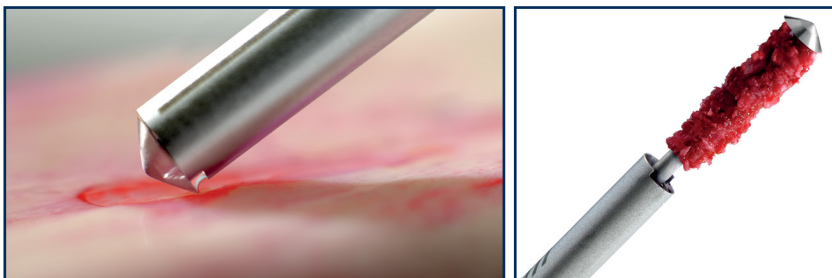
MADE IN ITALY



MICROSS

META

When using Micross, the bone tissue is directly collected in the chamber inside the instrument. The presence of coagulated blood in association with the bone tissue facilitates excellent biological plasticity of the graft material. The curled morphology of the collected bone has a volumising effect. This reduces the quantity of bone that needs to be harvested, and as a consequence, reduces the invasiveness of the procedure.



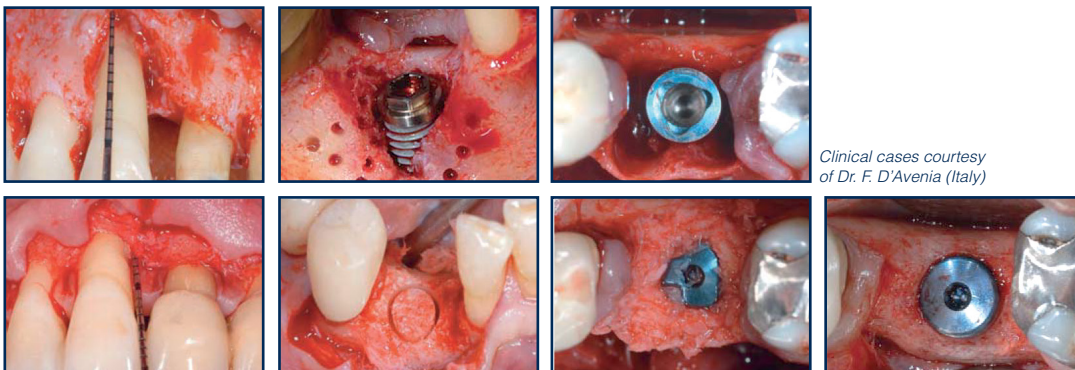
Chamber capacity 0.25 cc

Advantages of the disposable semicircular blade

- Maximum cutting efficiency
- Collect cortical bone shavings of appropriate size and thickness for the graft integration
- Excellent control during the harvesting procedure
- Effective on any bone surface (plane, concave or convex)



Periodontal defect Peri-implant defect Post-extraction defect



The only instrument for the tunnel harvesting technique

Clinical cases courtesy of Dr. F. D'Avenia (Italy)



Bone Augmentation Treatment/Operation	Recipient Site Features	Bone Graft Volume
Post-extraction alveolar defect	Self-contained intra-bony defect or four-wall defect of premolar root volume	0.25-0.3 cc.
Peri-implant dehiscence, single implant	Healthy mesial and distal adjacent teeth. Maximum implant surface exposure: 5 threads and 1/3 of the dental implant diameter	0.4 cc.
Peri-implant dehiscence, 2 adjacent implants	Healthy mesial and distal adjacent teeth. Maximum implant surface exposure: 5 threads and 1/3 of the dental implant diameter	0.7-0,8 cc.

Product Code: MET-4049 Micross 1 pc. Micross is a single use device, in a sterile single pack. Sterility is guaranteed for 3 years if the package is undamaged.